

The Flora & Fauna Collection

Flora

1998.2953 20th century (1953) watercolour painting; signed 'Jack Carter '53'.



2002.1913 20th century (1981) watercolour painting of blackberries with a butterfly; signed and dated recto 'Jack Carter 1981'.



2008.310.1 20th century watercolour painting of spring flowers; signed and dated 'Jack Carter 1989'.



2002.1055 20th century (1980-2000) botanical watercolour painting of an Amaryllis Hippeastrum; artist Jill Coombes; titled and signed.



2012.272 20th century watercolour and gouache painting; signed recto 'Edith Hilder'; title 'Still Life Study of a Winter Rose and Foliage'.



2011.252 Three 18th century botanical watercolour paintings; artist Anne Lee; 'Epilobium Angustifolium' (July 1772), 'Polgonum Perficaria.Lin' (20 September 1771) and 'Vicia Fepium' (June 1772).



2011.251 21st Century botanical watercolour painting of an aubergine plant; signed recto 'S. Merrikin'; artist Suzanne Merrikin.



2011.54 20th century (1950-1970) watercolour painting; artist John Parkhurst; signed 'J P ' recto.



2008.203 20th century (1970-2000) botanical watercolour painting of a white hyacinth; artist Graham Rust.



2008.202 20th century (1970-2000) botanical watercolour painting with pencil of Binnias; artist Graham Rust; titled and signed by the artist.



2008.336 20th century (1983-1988) watercolour painting; artist Enid Western; unsigned and undated.



1997.2177 20th century (1990) botanical watercolour painting; artist Enid Western; unsigned.



1992.327

20th century (1990) collection of botanical watercolour paintings by Enid Alison Western commissioned by creator of Horsham Museum's garden, Sylvia Standing; studies of a number of plants found in the garden, some notated but unsigned; set of four paintings depicting the four seasons; signed recto 'Enid Alison Western'.



1897.58

19th century (1896) watercolour painting; signed 'LMC 96' recto; text '219. Copy of Napoleonic Emblem, framed in wood from Croyland Abbey. Face of Napoleon seen in the foliage. Painted, framed and presented by Miss Catlin'.



2001.3543 19th century (1840-1850) lithograph with a list of the plants; title 'Mrs London's Lithograph'; also 'Day & Haghe, Lithrs. to the Queen'.



2008.409 21st Century botanical watercolour painting of Clematis; signed recto 'HG'; artist Heather Glenny.



2014.168.1 20th century (2012) watercolour painting by Heather Glenny used as one of the illustrations for her book 'A Celebration of Flowers'; initialed recto; title 'Rose Etoile de Hollande'.



2014.168.2 20th century (2012) watercolour painting by Heather Glenny used as one of the illustrations for her book 'A Celebration of Flowers'; initialed recto; title 'Camellia Blood of China'.



2014.168.3 21st century (2012) watercolour painting by Heather Glenny used as one of the illustrations in her book 'A celebration of Flowers'; initialled recto; title 'Mauve Spring Crocus'.



2014.177.1 21st century botanical watercolour painting of ivy by Hazel Barnard; initialled and dated 'HB 2013' recto.



2014.177.2 21st century botanical watercolour painting entitled 'Dog-Rose' by Hazel Barnard; initialled and dated 'HB 2012' recto.



2014.177.3 21st century botanical watercolour painting of catkins entitled 'Corylus Avellana' by Hazel Barnard; initialled and dated 'HB 2012' recto.



2014.177.4 21st century botanical watercolour painting of a Windflower (Anemone Blanda) by Hazel Barnard; initialled and dated 'HB 2013' recto.



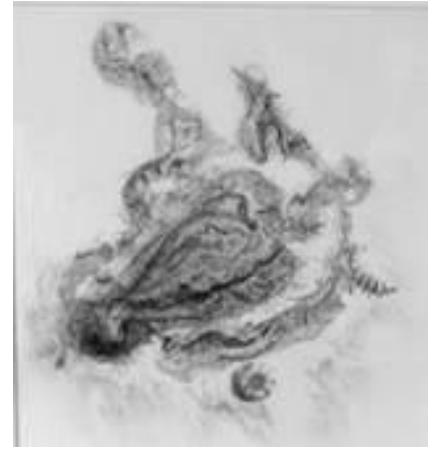
2011.421 21st Century (2011) watercolour and mixed media painting; signed 'Jean Jackman' recto.



2008.411 Late 20th/Early 21st Century (1998-2008) pen and wash drawing; title 'Poppies'; artist Beryl Dold; signed recto.



2008.116 21st Century pencil drawing with watercolour wash; artist Tanya Rotherfield; a study of rotting fruit depicting the decomposition; unsigned.



1997.672.1 19th century (1863) pencil drawing of wild hedge roses; signed and dated recto 'J L Peel, June 15th 1863'; verso 'Jessie Little Peel'.



1997.2015 20th century (1920-1960) watercolour painting of Nasturtium flowers; unsigned.



2009.180 21st century (2001-2009) watercolour painting on vellum of two purple violas by Alice Harman; signed recto.



2009.167 21st century botanical watercolour with pencil painting by Suzanne Merrikin; signed recto 'S Merrikin' and titled 'Purple Hellbore, Flowers, Seedhead, Leaf'.



2010.2 Late 18th/19th century botanical prints; hand coloured with watercolour; originally from Curtis's Botanical Magazine.



2009.347 20th century (1901-1910) botanical watercolour with pencil painting; text below 'Notholirium Campanulatum'; initialled 'L.J.' verso.



2009.348 20th century (1901-1910) botanical watercolour with pencil painting; text 'Lilium Ochraceum'; initialled recto 'LJ'.



2002.1247 21st century (2000-2002) watercolour painting of a botanical study of sweetcorn; signed recto 'Jill Coombs'.



2002.1248 21st century watercolour painting with pencil on vellum; botanical illustration of a Japanese quince; initialled and dated 'WP 2001'; artist Wendy Alexandra Page.



2014.254 21st century (2013) botanical watercolour painting by Jill Coombs entitled 'Rhododendron Wardii' painted for the Nymans Archive; signed by the artist.



Fauna

2013.12 Large 21st century (2005-2010) oil painting entitled 'Stag and Swallows' by Alison Ingram; signed recto by the artist; based on Hercules, a red deer stag from Warnham Deer Farm.



2008.256 19th century (1864-1884) watercolour painting of pussy willow; signed recto 'H C Coleman'; Helen Cordelia Coleman.



2008.257 19th century (1864-1884) watercolour painting of dead house martins; signed recto 'H C Coleman'; Helena Cordelia Coleman.



1977.56.5 20th century (1940-1970) lithograph; original artist Professor John Hull Grundy; signed recto.



1997.2220 19th century pen and ink drawing; unsigned.



2003.278 21st Century (2000-2002) acrylic painting on a beach pebble; signed verso 'Janet Kay'.



1997.2108 19th century (1850-1900) watercolour painting of dead grouse; signed 'J Hardy'.



1997.2113 19th century (1850-1900) watercolour painting of dead pheasants; signed 'J Hardy'.



2010.318 20th Century pastel drawing of two white pedigree poodles belonging to Nora and George Pinion; initials 'P B' and date '7.10.61'; also 'Prince and Dandy'.



2011.93 Late 19th/early 20th century pencil drawings (recto and verso); artist John Guille Millais (1865-1931); signed 'J G Millais' recto; belonged to Sir Peter and Lady Scott.



2011.256 20th century (1990-1995) lithograph of a ram; original artist Alison Milner-Gulland; title 'Black Faced Ram' verso; signed recto.

